

Reptiles (REPTILIA) of the Bigal River Biological Reserve (1100-435 m - Orellana Province, Ecuador), Sumaco National Park´s southern buffer zone

Paul Hamilton², Ross Meynard², Morley Reed, Jorge Valencia³, Maria Elena Barragan³, Thierry Garcia¹, Marion Hiruois¹

¹Sumac Muyu Foundation - Ecuador, ²RAEI - USA, and ³Vivarium de Quito - Ecuador

Photos by Thierry Garcia and Arthur Anker

PDF design: Thibaut Giroir

© Sumac Muyu Foundation. sumacmuyu@gmail.com, <http://reservadelriobigal.googlepages.com>, version 1, 2011.



1 *Gonatodes concinnatus* ♀ (photo TG)
GEKKONIDAE



1 *Gonatodes concinnatus* ♂ (photo AA)
GEKKONIDAE



2 *Lepidoblepharis cf. festae* (photo TG)
GEKKONIDAE



3 *Thecadactylus solimoensis* (photo TG)
GEKKONIDAE



4 *Iphisa elegans* (photo TG)
GYMNOPHTALMIDAE



5 *Alopoglossus angulatus* (photo TG)
GYMNOPHTALMIDAE



6 *Anadia cf. ocellata* (photo TG)
GYMNOPHTALMIDAE



7 *Cercosaura cf. oshaughnessy* (photo TG)
GYMNOPHTALMIDAE



8 *Potamites cochraeae* (photo TG)
GYMNOPHTALMIDAE



9 *Potamites ecpleopus* (photo TG)
GYMNOPHTALMIDAE



10 *Potamites strangulatum* (photo TG)
GYMNOPHTALMIDAE



11 *Potamites sp.* (photo TG)
GYMNOPHTALMIDAE



12 *Enyaloides spirurus* ♀ (photo TG)
HOPLOCERCIDAE



13 *Enyaloides sp.* (photo TG)
HOPLOCERCIDAE



14 *Anolis fuscoauratus* (photo TG)
POLYCHROTIDAE



15 *Anolis nitens* (photo TG)
POLYCHROTIDAE



16 *Anolis ortonii* (photo TG)
POLYCHROTIDAE



17 *Anolis punctatus* (photo TG)
POLYCHROTIDAE



18 *Anolis trachyderma* (photo TG)
POLYCHROTIDAE



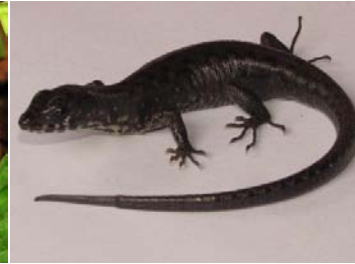
19 *Anolis sp.* (photo TG)
POLYCHROTIDAE



20 *Polychrus marmoratus* (photo TG)
POLYCHROTIDAE



21 *Plica umbra* (photo TG)
TROPIDURIDAE



22 Unidentified ? (photo TG)



23 Unidentified ? (photo TG)



24 *Mabuya altoamazonica* (photo TG)
SCINCIDAE



25 *Amphibaesa fuliginosa* (photo TG)
AMPHISBAENIDAE



26 Unidentified (photo TG)
LEPTOTYPHLOPIDAE



26 Unidentified (photo TG)
LEPTOTYPHLOPIDAE



27 *Epicrates cenchria cenchria* (photo TG)
BOIDAE



28 *Chironius exoletus* (photo TG)
COLUBRIDAE



29 *Chironius fuscus* (photo TG)
COLUBRIDAE



30 *Chironius scurrulus* (photo TG)
COLUBRIDAE



31 *Chironius sp.* (photo TG)
COLUBRIDAE



32 *Drymoluber sp.* (photo TG)
COLUBRIDAE



33 *Imantodes cenchoa cenchoa* (photo TG)
COLUBRIDAE



34 *Imantodes lentiferus* (photo TG)
COLUBRIDAE



35 *Leptodeira annulata annulata* (photo TG)
COLUBRIDAE



36 *Synophis bicolor* (photo TG)
COLUBRIDAE



37 *Taeniophallus brevirostris* (photo TG)
COLUBRIDAE



38 *Atractus elaps* (photo TG)
COLUBRIDAE



39 *Clelia clelia clelia* (photo TG)
COLUBRIDAE



39 *Clelia clelia clelia* (Juv.) (photo TG)
COLUBRIDAE



40 *Dipsas catesbyi* (photo TG)
COLUBRIDAE



41 *Dipsas indica* (photo TG)
COLUBRIDAE



43 *Dipsas indica ecuadorensis* (photo TG)
COLUBRIDAE



43 *Liophis* sp. (photo TG)
COLUBRIDAE



44 *Ninia atrata* (photo TG)
COLUBRIDAE



45 *Ninia hudsoni* (photo TG)
COLUBRIDAE



46 *Oxyrhopus formosus* (photo TG)
COLUBRIDAE



47 *Oxyrhopus melanogenys* (photo TG)
COLUBRIDAE



48 *Oxyrhopus petola* cf. *digitalis* (photo TG)
COLUBRIDAE



49 *Oxyrhopus petola* (Juv.) (photo TG)
COLUBRIDAE



50 *Siphlophis cervinus* (photo TG)
COLUBRIDAE



50 *Siphlophis cervinus* (photo TG)
COLUBRIDAE



51 *Xenoxobelis argenteus* (photo TG)
COLUBRIDAE



52 *Dendrophidon dendrophis* (photo TG)
COLUBRIDAE



53 *Micrurus hemprichii ortonii* (photo TG)
ELAPIDAE



53 *Micrurus hemprichii ortonii* (photo TG)
ELAPIDAE



54 *Micrurus lemniscatus helleri* (photo TG)
ELAPIDAE



55 *Micrurus spixii obscurus* (photo TG)
ELAPIDAE



56 *Bothriopsis taeniata* (photo TG)
VIPERIDAE



56 *Bothriopsis taeniata* (Subad.) (photo TG)
VIPERIDAE



57 *Bothrops atrox* (Neonate) (photo TG)
VIPERIDAE



57 *Bothrops atrox* (Young ad.) (photo TG)
VIPERIDAE



58 *Geochelone denticulata* (photo TG)
TESTUDINIDAE



58 *Geochelone denticulata* (photo TG)
TESTUDINIDAE