

Clearwings (ITHOMIINAE) of the Bigal River Biological Reserve (1100-435 m - Orellana Province, Ecuador), Sumaco National Park's southern buffer zone

Dr. Keith R. Willmott³, Kim Garwood², Thierry Garcia¹, Marion Hiruois¹

¹Sumac Muyu Foundation - Ecuador, ²Neotropical Butterflies - USA - <http://www.neotropicalbutterflies.com>, and ³Florida Museum of Natural History/McGuire Center for Lepidoptera and Biodiversity - USA - <http://www.flmnh.ufl.edu>

Photos by Thierry Garcia and Marion Hiruois

PDF design: Thibaut Giroir

© Sumac Muyu Foundation. sumacmuyu@gmail.com, <http://reservadelriobigal.googlepages.com>, version 1, 2011.



1 *Dircenna dero* (photo TG)
DIRCENNINI



2 *Dircenna loreta* (photo TG)
DIRCENNINI



3 *Brevioleria arzalia new ssp.* (photo TG)
GODYRIDINI



4 *Godyris zavaleta matronalis* (photo TG)
GODYRIDINI



5 *Greta libethris* (photo TG)
GODYRIDINI



5 *Greta libethris* (photo TG)
GODYRIDINI



6 *Hypoleria lavinia chrysodonia* (photo TG)
GODYRIDINI



7 *Ithomia agnosia* (photo TG)
GODYRIDINI



8 *Ithomia salapia derasa* (photo TG)
GODYRIDINI



9 *Ithomia salapia salapia* (photo TG)
GODYRIDINI



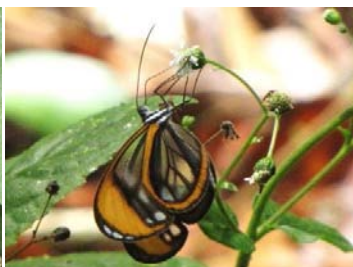
10 *Ceratinia neso espriella* (photo TG)
ITHOMIINI



11 *Ceratinia tutia poecila* (photo TG)
ITHOMIINI



11 *Ceratinia tutia poecila* (photo TG)
ITHOMIINI



12 *Pseudoscada florula aureola* (photo TG)
ITHOMIINI



12 *Pseudoscada florula aureola* (photo TG)
ITHOMIINI



13 *Pseudoscada timna timna* (photo TG)
ITHOMIINI



13 *Pseudoscada timna timna* (photo TG)
ITHOMIINI



14 *Pteronymia primula* (photo TG)
ITHOMIINI



15 *Thyridia psidii* (photo TG)
ITHOMIINI



15 *Thyridia psidii* (photo TG)
ITHOMIINI



16 *Forbestra olivencia juntana* (photo TG)
MECHANITINI



16 *Forbestra olivencia juntana* (photo TG)
MECHANITINI



17 *Mechanitis lysimnia elisa* (photo TG)
MECHANITINI



17 *Mechanitis lysimnia elisa* (photo TG)
MECHANITINI



18 *Mechanitis mazaesus* (photo TG)
MECHANITINI



18 *Mechanitis mazaesus* (photo TG)
MECHANITINI



19 *Mechanitis messenoides deceptus*
MECHANITINI



20 *Mechanitis messenoides messenoides*
MECHANITINI



21 *Methona confusa* (photo TG)
MECHANITINI



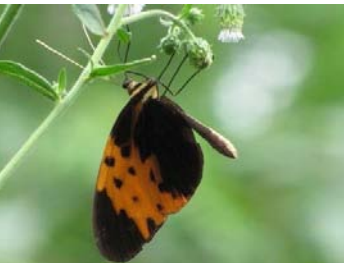
22 *Scada zibia quotidiana* (photo TG)
MECHANITINI



23 *Eutresis hyperereia bonosana* (photo TG)
MELINAEINI



23 *Eutresis hyperereia bonosana* (photo TG)
MELINAEINI



24 *Melinaea marsaeus mothone* (photo TG)
MELINAEINI



25 *Melinaea menophilus zaneka* (photo TG)
MELINAEINI



25 *Melinaea menophilus zaneka* (photo TG)
MELINAEINI



26 *Hypothyris euclea intermedia* (photo TG)
NAPEOGENINI



27 *Hypothyris semifulva satura* (photo TG)
NAPEOGENINI



33 *Hyalyris coeno norellana* (photo TG)
NAPEOGENINI



33 *Hyalyris coeno norellana* (photo TG)
NAPEOGENINI



28 *Hyoscada illinissa ida* (photo MH)
OLERIINI



28 *Hyoscada illinissa ida* (photo MH)
OLERIINI



29 *Oleria estella* (photo TG)
OLERIINI



29 *Oleria estella* (photo TG)
OLERIINI



30 *Oleria ileridina lerida* (photo MH)
OLERIINI



31 *Oleria onega* (photo TG)
OLERIINI



32 *Aeria eurimedia negricola* (photo TG)
TITHOREINI