

Tropicals (BIBLIDINAE) of the Bigal River Biological Reserve (1100-435 m - Orellana Province, Ecuador), Sumaco National Park´s southern buffer zone

Kim Garwood², Thierry Garcia¹, Marion Hiruois¹

¹Sumac Muyu Foundation - Ecuador, and ²Neotropical Butterflies - USA - <http://www.neotropicalbutterflies.com>

Photos by Thierry Garcia and Marion Hiruois

PDF design: Thibaut Giroir

© Sumac Muyu Foundation. sumacmuyu@gmail.com, <http://reservadelriobigal.googlepages.com>, version 1, 2011.



1 *Hamadryas chloe* (photo TG)
AGERONIINI



2 *Hamadryas sp.* (photo TG)
AGERONIINI



2 *Hamadryas sp.* (photo TG)
AGERONIINI



3 *Batesia hypochlora* (photo TG)
BIBLIDINI



4 *Biblis hyperia* (photo TG)
BIBLIDINI



5 *Callicore cynosura cynosura* (photo TG)
BIBLIDINI



6 *Callicore eunomia* (photo TG)
BIBLIDINI



7 *Callicore lyca salamis* (photo TG)
BIBLIDINI



8 *Callicore pygas ssp.* (photo TG)
BIBLIDINI



9 *Callicore Tolima* (photo TG)
BIBLIDINI



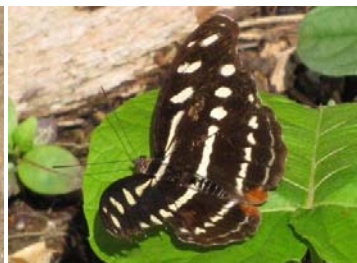
10 *Catonephele acontius* (photo TG)
BIBLIDINI



11 *Catonephele numilia* (photo TG)
BIBLIDINI



11 *Catonephele numilia* (photo TG)
BIBLIDINI



12 *Catonephele orites* (photo TG)
BIBLIDINI



13 *Catonephele salacia* ♂ (photo TG)
BIBLIDINI



14 *Catonephele salambria* (photo TG)
BIBLIDINI



14 *Catonephele salambria* ♀ (photo TG)
BIBLIDINI



14 *Catonephele salambria* ♂ (photo TG)
BIBLIDINI



15 *Catonephele* sp. (photo TG)
BIBLIDINI



16 *Diaethria clymena* (photo TG)
BIBLIDINI



16 *Diaethria clymena* (photo TG)
BIBLIDINI



17 *Diaethria clymena bourcierii* (photo TG)
BIBLIDINI



18 *Diaethria Euclides* (photo TG)
BIBLIDINI



19 *Dynamine artemisia glauce* (photo TG)
BIBLIDINI



19 *Dynamine artemisia glauce* (photo TG)
BIBLIDINI



20 *Dynamine gisella* (photo MH)
BIBLIDINI



20 *Dynamine gisella* (photo MH)
BIBLIDINI



21 *Epiphile lampethusa* (photo MH)
BIBLIDINI



22 *Eunica Alcmena* (photo TG)
BIBLIDINI



22 *Eunica Alcmena* (photo TG)
BIBLIDINI



23 *Eunica norica* (photo TG)
BIBLIDINI



23 *Eunica norica* (photo TG)
BIBLIDINI



24 *Eunica veronica* (photo TG)
BIBLIDINI



24 *Eunica veronica* (photo TG)
BIBLIDINI



25 *Eunica* sp. (photo TG)
BIBLIDINI



26 *Nessaea hewitsonii* (photo TG)
BIBLIDINI



26 *Nessaea hewitsonii* (photo TG)
BIBLIDINI



27 *Panacea cf. procilla* (photo TG)
BIBLIDINI



27 *Panacea cf. procilla* (photo TG)
BIBLIDINI



28 *Panacea cf. regina I* (photo TG)
BIBLIDINI



29 *Panacea cf. regina II* (photo TG)
BIBLIDINI



30 *Panacea procilla divalis* (photo TG)
BIBLIDINI



31 *Peria lamis* (photo TG)
BIBLIDINI



31 *Peria lamis* (photo TG)
BIBLIDINI



32 *Pyrrhogyra amphiro* (photo TG)
BIBLIDINI



32 *Pyrrhogyra amphiro* (photo TG)
BIBLIDINI



33 *Pyrrhogyra edocla* (photo TG)
BIBLIDINI



33 *Pyrrhogyra edocla* (photo TG)
BIBLIDINI



34 *Pyrrhogyra otolais* (photo TG)
BIBLIDINI



35 *Marpesia berania* ♀ (photo TG)
CYRESTINI



35 *Marpesia berania* ♂ (photo TG)
CYRESTINI



36 *Marpesia chiron* ♂ (photo TG)
CYRESTINI



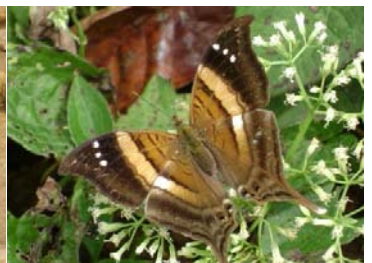
36 *Marpesia chiron* (photo TG)
CYRESTINI



37 *Marpesia crethon* (photo TG)
CYRESTINI



37 *Marpesia crethon* (photo TG)
CYRESTINI



38 *Marpesia furcula* ♀ (photo TG)
CYRESTINI



38 *Marpesia furcula* ♀ (photo TG)
CYRESTINI



39 *Marpesia livius* (photo TG)
CYRESTINI



39 *Marpesia livius* (photo TG)
CYRESTINI



40 *Marpesia petreus* (photo TG)
CYRESTINI



41 *Marpesia zerynthia* (photo TG)
CYRESTINI



41 *Marpesia zerynthia* (photo TG)
CYRESTINI



42 *Asterope markii* (photo TG)
EIPPHILINI



43 *Nica flavilla* (photo TG)
EIPPHILINI



43 *Nica flavilla* (photo TG)
EIPPHILINI



44 *Temenis laothoe* (photo TG)
EIPPHILINI



44 *Temenis laothoe* (photo TG)
EIPPHILINI



45 *Temenis pulchra pallidior* ♂ (photo TG)
EIPPHILINI



45 *Temenis pulchra pallidior* ♂ (photo TG)
EIPPHILINI